



Coombefield Veterinary Hospital Sheep Newsletter May 2016



Nematodirus Risk Assessment

As I am writing this newsletter we are in the middle of some strange late April weather with snow and hail making us think spring has still not properly arrived.

BUT we are nearly in May and hopefully things will start to cheer up soon.

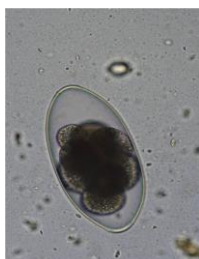
With the arrival of May we should be (if we have not done already) starting to think about the risk of Nematodirus and preventing problems in our lambs.

Risk assessment for Nematodirus causing a problem is as follows (tick those that apply to you):

Are your lambs grazing pasture that carried lambs last spring?	
<i>If you tick above and any of the boxes below, this means your lambs are at risk:</i>	
Are they old enough to be eating significant amounts of grass? (generally 6 –12 weeks of age but may be younger if ewes are not milking well)	
Do you have groups where there is also likely to be a challenge from coccidiosis? For example mixed aged lambs are a higher risk	
Has there been a sudden, cold snap recently followed by a period of warm weather?	✓ ?
Have you got lambs that are under other stresses e.g. triplets, fostered, on young or older ewes.	

If you need to treat for Nematodirus then a white drench is still the best one to use. These are cheap, highly effective against this parasite on most farms and suitable for young lambs.

SCOPS recommends checking that the treatment has been effective by taking a worm egg count 10 days after treatment. You may need to treat lambs more than once depending on the spread of ages in a group and weather conditions.



An accurate forecast for Nematodirus according to area can be found at:

<http://www.scops.org.uk/nematodirus-forecast.html>

Current local forecast from website:

Exeter Airport (27.0m a.s.l)

MODERATE RISK - Hatching is predicted to start within 7-14 days if good weather continues.

Check updates regularly.

Please refer to SCOPS guidance on strategies to avoid and treat infection at www.scops.org.uk

Important:

There will be variation from farm to farm and even field to field. Sheep farmers are urged to assess their risk based on the history of the field (lambs last year a high risk for example). South facing fields will tend to have an earlier hatch. Altitude is also important. As a guide, every 100m increase in altitude will delay hatching by about 7 days (for example if the nearest station is at 200m a.s.l and the farm is at 300m a.s.l, hatching will be delayed by around 7 days beyond our forecast)

[UPDATED:2016-04-27]

Extension Update

Summerleaze Farm & Equine Department is under-going quite a transformation. We will soon have larger facilities dedicated to farm animals making life even easier for those middle of the night lambings!

“Watch this space for further updates!”



Prescribing Medicines

All medicines dispensed are prescribed by one of the farm team. Whenever possible we would request you telephone to order medicines prior to collection as this enables the reception team to have asked a vet and dispensed your medicines prior to your arrival. If emailing is easier we are happy to receive your order this way.



www.facebook.com/coombefieldfarmdepartment

FARM DEPARTMENT INFORMATION

If you would like to speak to a Farm vet or arrange a visit, please call 01297 630515

Medicines can be requested via email or by telephone

Email: farm@axvets.co.uk